



The Glennie School

Strategic Plan

2018 to 2020



All She Can Be®

All She Can Be®

Vision & Mission

Vision

To develop in each Glennie girl the intellectual, physical and spiritual potential to be All She Can Be® Glennie girls are to be educated to the highest standards of which they are capable. In addition, Glennie girls are to be given the opportunities to develop their sporting and cultural talents through a rich, diverse and relevant co-curricular program.

By achieving an understanding of their own spiritual dimension, Glennie girls will make a positive contribution to the world with a sense of their own worth and character in addition to a well-developed sense of citizenship.

As well-skilled, well-rounded and well-grounded young people of excellent character, integrity and poise, Glennie girls will be able to be all they can be.

Mission

As a community where tomorrow's women learn, our mission is to provide girls with dynamic opportunities in education, training and personal growth which develop their individual potential and prepare them for life. We shall incorporate traditional values within a caring, Christian environment, together with the best contemporary teaching methods and learning experiences.

Values

Integrity

We are truthful and sincere. We ensure consistency between what we say and what we do, as well as between what we believe and how we behave.

Respect

We respect ourselves and treat others with courtesy, dignity and positive regard. We honour the rights of others. We respect our school, the environment and the world around us.

Compassion

We are sensitive to the needs of each individual. We support and nurture those less fortunate than ourselves. We treat each other as we wish to be treated ourselves.

Courage

We continue to strive to improve as individuals and we remain positive, resilient and forward-thinking, despite adversity or challenge. We know that perseverance, effort and a growth mindset can help us as individuals and as members of a team, for the benefit of ourselves and our community.

All She Can Be®



Empowered Girls

Glennie graduates should be capable and confident young women of strength and integrity – optimistic, self-aware and adaptable, with a strong sense of compassion and social justice.

- Develop in all Glennie girls an understanding of what it means to belong to a community of faith within the Anglican tradition, and to deepen the culture of respect for the diversity of beliefs in society.
- Develop in all Glennie girls a sense of wellbeing, confidence and resilience whilst treating others with respect and compassion.
- Encourage a culture of service and social justice as students participate in local and global projects and experiences.
- Offer diverse and sustainable quality extracurricular programs, encouraging student participation across a range of activities.
- Maintain a boarding house where all students are supported academically and emotionally, ensuring that it is a home away from home.

Enriched Learning

The individual needs of each Glennie girl matter, thus we tailor our innovative, rigorous and engaging curriculum to support her on her learning journey.

- Develop and implement a whole school approach to teaching and learning, with a focus on essential skills, deep learning and preparing girls for their future, the new Senior Curriculum or alternative pathways.
- Ensure curriculum and pedagogy are informed by the latest research and use innovative technology to enhance teaching and learning
- Develop and enrich personalised pathways for all students, including extension opportunities and the provision of support.
- Encourage a growth mindset in order to foster independence, resilience, perseverance and highly adaptive thinking and learning.





Passionate Staff

Glennie students are supported by staff who embrace a professional working culture that promotes excellence, innovation, collegiality and growth.

- Recruit and retain quality teachers and support staff.
- Promote the pursuit of excellence, innovation, collegiality and growth through recognition of passionate staff.
- Create programs to support both early career and experienced teachers.
- Build a culture that enhances professional learning, professional sharing, open communication, collegiality and wellbeing of staff.

Connected Community

Glennie students are embraced by our vibrant, welcoming, and family-oriented community that provides opportunities for personal growth and a sense of belonging, as well as local, national and international relationships and partnerships.

- Enhance the School's presence and reputation in the community by being a centre for learning, sport and arts.
- Continuing to build an inclusive and welcoming culture where students, parents and the wider community actively engage with and contribute to the Glennie 'spirit'.
- Maintaining lifelong relationships with Glennie Old Girls and past members of the School community.
- Encouraging a culture of philanthropy, service and giving for students, parents and the Glennie community.



Sustainable Operations

The Glennie Community is supported by sustainable operations that maximise financial performance, support investment in facilities and resources, minimise environmental impact and ensure efficient and effective operations.

- Creating a concise Risk Management Profile in order to ensure that risks are being monitored and addressed.
- Growing enrolments by promoting the School's Brand proposition in current and new markets through traditional and innovative methods both internally and externally.
- Maintaining the financial health of the school to support flexible investment in growth strategies for the school to be a leading provider of girls education.
- Enhancing the facilities and further developing a master plan that enables school growth and protects the natural environment.
- Reviewing all School operations to ensure maximum efficiency in the utilisation of available resources.

Our Heritage

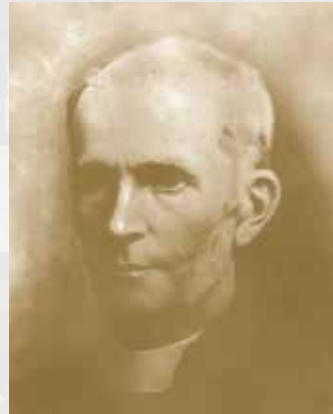
Founded in 1908, The Glennie School has operated on its present site on the west side of the City of Toowoomba since 1910.

Glennie perpetuates the work of Archdeacon Benjamin Glennie (1812–1900) who spent much of his life serving the spiritual needs of residents on the Darling Downs. He was also concerned that educational facilities should be provided for the children of settlers.

The then Canon Glennie raised funds that were given to the Anglican Diocese of Brisbane and used in 1898 to acquire the land on which the School now stands.

Following Canon Glennie's death, an endowment fund was established and became known as the Glennie Memorial School Fund. Under this title, the endowment fund attracted considerable public support and became the nucleus of the monies that built the Glennie Memorial School.

The School was dedicated on 10 August 1910. The Glennie Kindergarten and Glennie Prep (now Glennie Junior Years) were established at St Luke's Church Hall in 1912.



Archdeacon Glennie
Founder



All She Can Be®



THE GLENNIE SCHOOL

246A Herries Street,
Toowoomba, Qld, 4350

P: (07) 4688 8888

F: (07) 4688 8848

www.glennie.qld.edu.au
enquiries@glennie.qld.edu.au

Cricos 00496D

ANGLICAN • GIRLS K-12 • DAY • BOARDING

